



Farmington

Groundwater Recharge Program

Making Water a Crop for Eastern San Joaquin County's Future



Program Timeline



Corps authorized to study modifications at Farmington Dam for conjunctive use



Conjunctive Use Study finds groundwater recharge most cost-effective approach



Congress authorizes Program - no appropriations

Technical Study of Recharge Begins



Technical Study Completed Program Defined



Construction Started on first project



Identify, evaluate and construct regional groundwater recharge projects; on-going community outreach; communicate program status, performance and future actions.

2010

1996

1997

1998

1999

2000

2001

2002

2003

2004

2005

2006

Annual Appropriations



\$

\$

\$

\$



US Army Corps of Engineers

\$

\$

\$

\$

Program Summary

◆ Program Partners

- Stockton East Water District
- Other local participants
- US Army Corps of Engineers



◆ Program Goal: 35,000 acre-feet/year

◆ Uses existing water supplies

◆ 25-30 parcels, totaling 1,200 acres



◆ Term of Participation: typically up to 10 years

◆ Water conveyance system improvements

Program Status

◆ Sites Under Evaluation

- San Joaquin Flood Control Agency Detention Basin No. 1, Mosher Creek and Highway 99; 26 acres
- John Verner, Mariposa Lakes development; 300 acres
- BNSF Intermodal Facility, Austin Road, Stockton; 60 acres
- Julio Escobedo Jr. Farm Trust, Patrick Road, Stockton; two parcels 20 & 60 acres
- Sam and Sumiko Motoike, Jack Tone Road, Stockton; 2 parcels up to 150 acres total
- David Rajkovich, No. Ashley Lane, Stockton; up to 150 acres
- Nazario Gonzalez, No. Kennefick Road, Galt; up to 50 acres

Program Status

◆ Sites Under Evaluation

- San Joaquin Flood Control Agency Detention Basin No. 1, Mosher Creek and Highway 99; 26 acres
 - Currently in Stage 3 Field Testing
 - Field tests began mid October and is continuing through November
 - Initial results are positive: 0.3 vertical feet per day of percolation



An Investment in San Joaquin Co.

◆ Continued Involvement by Landowners

- Growers
- Lease Holders
- Developers
- Government Agencies

◆ Peer Referrals and Goodwill

- Partnership
- County Elected Officials
- County Executives
- County Farm Bureau
- Chamber of Commerce & Business Community
- Area Water Agencies

Future Activities



Inventory sites



Screen & demonstrate sites



Long Term Operations



Continued outreach

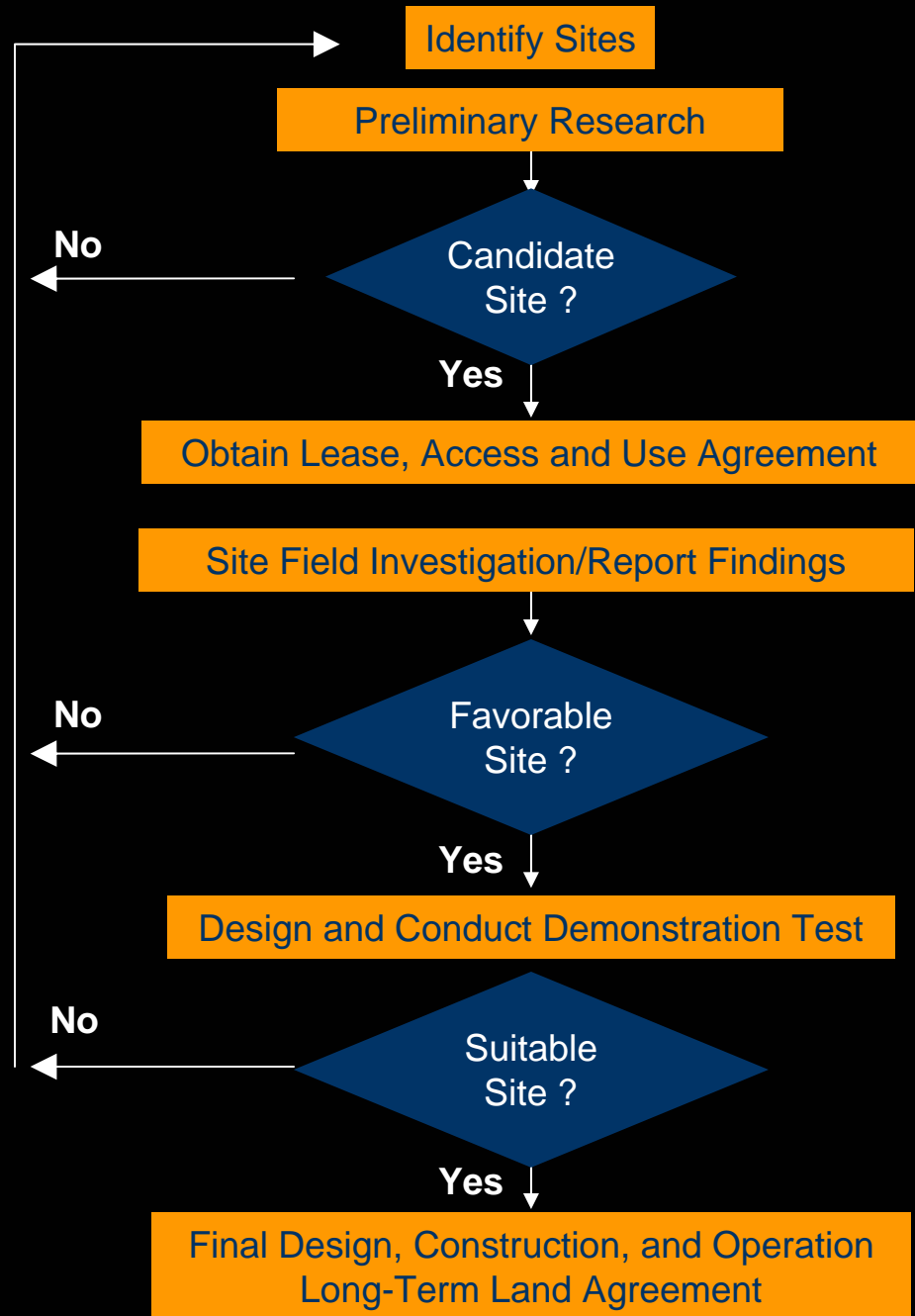
Site Selection Stages

Site Screening

Field Investigation

Site Testing

Long-Term O&M



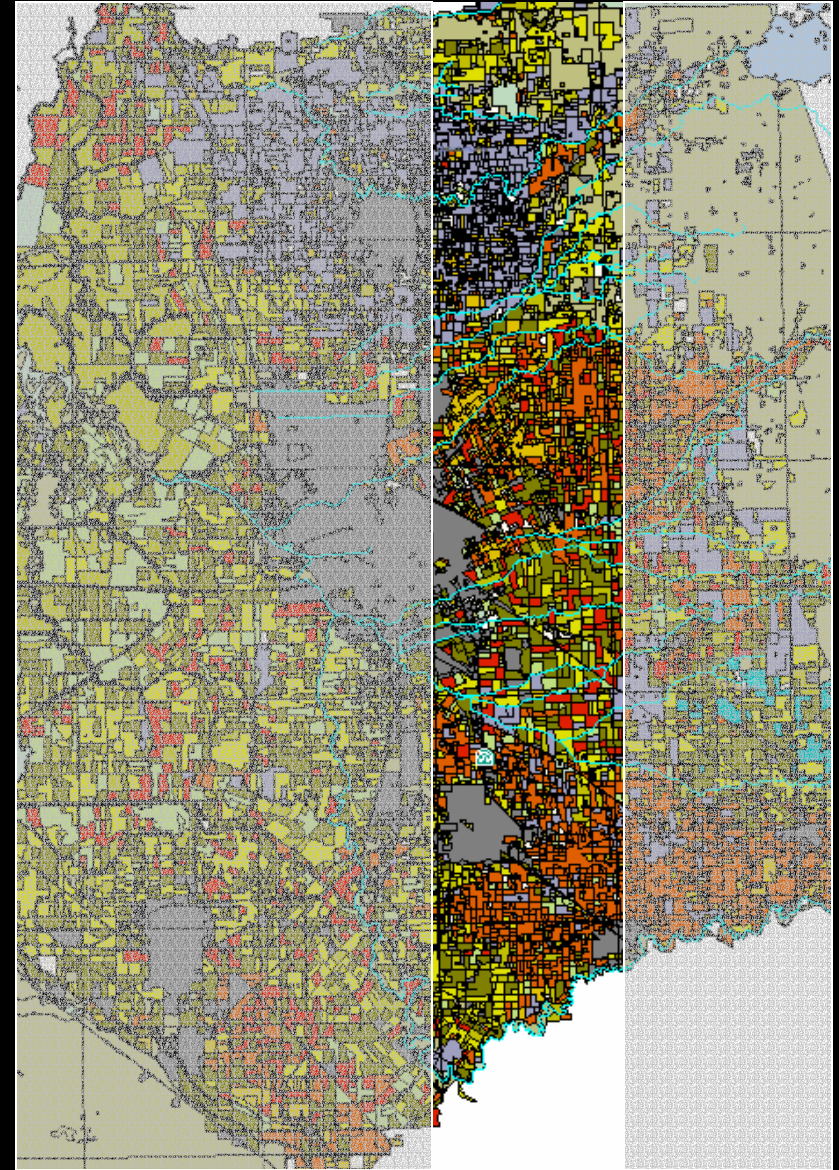
STAGE 1 - Site Screening

◆ Site Identification

- Up to 2,500 acres
- Between Hwy 99 and Jack Tone Road
- 25-30 parcels

◆ Background Research

- Land-owner interest
- Demonstrate benefits



STAGE 2 - Field Investigation

◆ Identify sites for field investigations based on site screening

- Site location and soils
- Land availability
- Water supplies
- Soil and water quality

◆ Field investigation

- Soil samples
- Water levels
- Geologic conditions



STAGE 3 - Site Testing



Typical Drilling and
Well Construction
Activity

◆ Demonstration tests

- 2 to 3 years in duration
- Year-round or seasonal testing

◆ Lease agreements

◆ Site preparation

◆ Monitoring

- Surface water quantity and quality
- Groundwater levels and quality

For More Information

Kevin Kauffman, General Manager

Stockton East Water District

209-948-0333

Patrick Dwyer, Project Manager

U.S. Army Corps of Engineers

916-557-7802

Chris Petersen or Trevor Joseph

MWH Americas Inc.

916-924-8844





Farmington

Groundwater Recharge Program

Thank you

